

ACTION MOB MINUTES
meeting held @ gallery 17 June 2011

Present: Wendy Snape
Faye Pini
Tracey Cass
Elizabeth Johns

PLEASE NOTE YOUR COMMENTS ON THOSE ISSUES DISCUSSED BELOW IS ENCOURAGED AND COUNTS JUST AS IF YOU WERE THERE! So please respond—failure to do so indicates approval of comments below:

INCREASED COMMUNICATION AMONGST ALL MEMBERS VIA E:MAIL AND COOKTOWN ART WEBSITE DISCUSSION FORUMS: In an effort to increase to participation by all members in the decision-making process and at the same time, decrease the number (and hours) of meetings, all members are encouraged to contribute their thoughts and action plans in the website forums and e:mails. (Please give this a go, for the sake of improving your involvement and therefore the capacity of the gallery.)

NEW MEMBER PACK The Gallery has recently been reminded that new members are not nurtured as well as they could/should be and for that reason, we propose a 'new member' pack which provides all the necessary information about the gallery, its processes and the privilege of being a volunteer member.

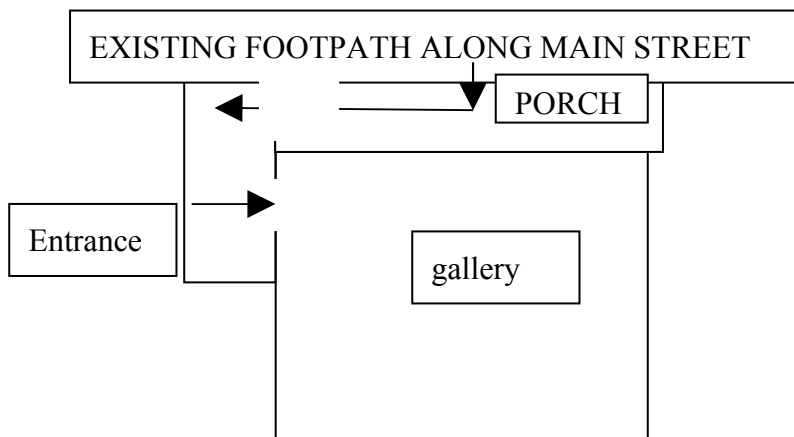
(We encourage new members and we love our existing ones!) Having completed their application form, some members are having to wait an unreasonable amount of time before a quorum of seven (7) existing members can approve. For this reason, it was agreed that **member applications will be available on line and approvals/comments are to be made over the internet and Cooktown Art's website.**

VOLUNTEER MEMBERS The gallery's very survival relies on three things:
. creatively active members who continue to provide the gallery with quality works,
. a general population including visitors who will purchase the artworks;
and finally . an army of volunteers who will keep the gallery open, administratively operating and financially viable!

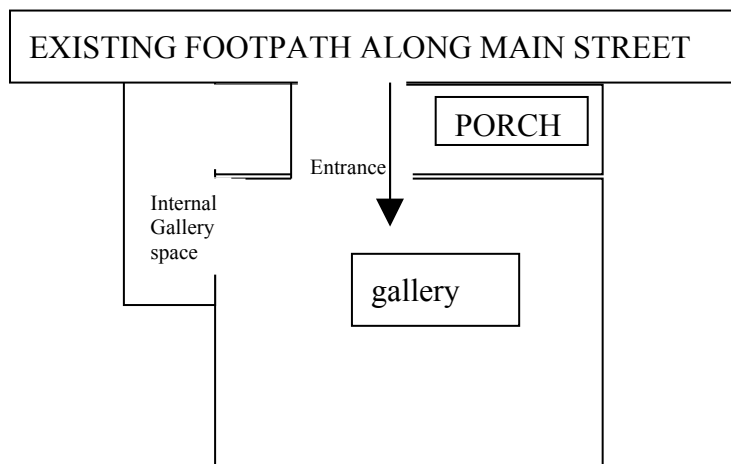
Creatively active members: For its part the gallery can encourage members with their works, offer professional workshops, run self-funded classes, host ad-hoc half-day workshops on location so members can share their methods and 'moment', continue to improve gallery infrastructure such as lighting, extensions, improved storage, etc.

The outcome will be an increased population of active members and an increase in gallery stock on offer to visitors to the gallery.

Visitors to purchase artworks: The gallery is currently a very unfriendly place to enter ... the 'front' is at the side and the entrance is confronting. The intention is to enclose the cement pad around half the porch, from the doorway to half way along the porch. Refer simple diagram below:



PLANS FOR THE FUTURE INCLUDE:



Stage One above is the simplest building/expense in order to achieve a friendly street frontage as well as increased gallery space. Tracey Cass has met with relevant Council people who approve in principle enclosing to the street.

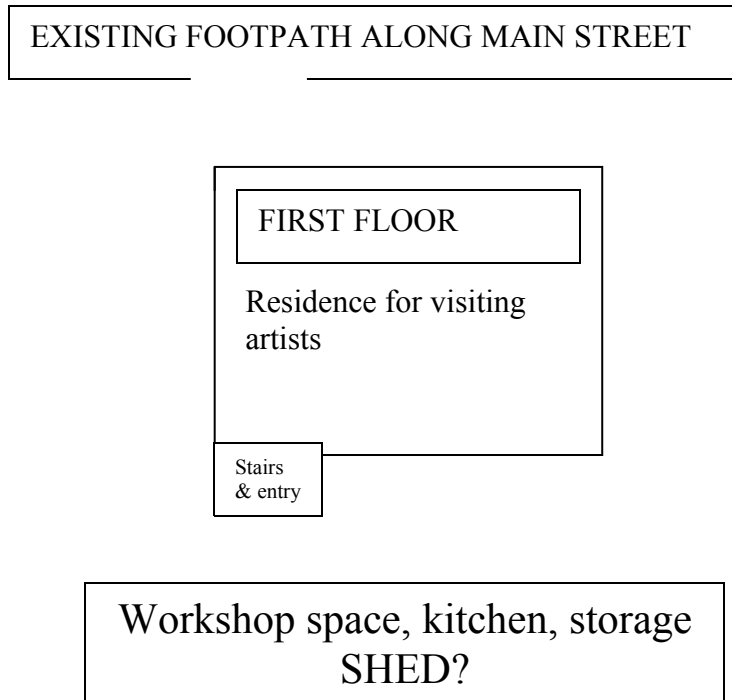
Stage One also includes: 1) security locks at front and back door. Faye Pini in contact with Rod Oldaker for quote. 2) new spot lighting throughout the gallery and 3) a beautiful new front door with a 4) mosaic entrance from the footpath.

The rest of the porch will be left as is to facilitate market days, kids days, tea parties, etc.

Tracey Cass has also met with Mathew Carey and briefed him on our plans for a quote. Mathew has explained that the corrugated roof will require patching in places. A quote is forthcoming.

Tracey Cass also looking into costs for gallery lighting and Reef Casino Community Grant for funding.

STAGE TWO:



Stage Two will require some serious fund-raising, a far more organized administration and perhaps even an amalgamation with the CCAA?!?

And finally, **an army of volunteers who will keep the gallery open, administratively operating and financially viable!**

The gallery is seriously considering a 'reward package' of some kind to encourage volunteer members and reward them for their time and effort as it is these people who ensure the gallery runs administratively & operationally. So ... whatever we can that doesn't cost much really, including:

- wholesale art supplies
- 10% commission on sales AND purchases (down from 15%)
- **One** free attendance at annual weekend workshop of choice.

Elizabeth Johns exhibition:

All members and their guests are encouraged to attend opening night on Friday, 8 July from 6-7.30pm.

The gallery is to be given over exclusively to Elizabeth's work. Elizabeth is providing wine and beer will be for sale. Members, PLEASE bring a plate to assist Elizabeth with catering.

OTHER GENERAL BUSINESS

Reasonable prices for artwork – A number of people have been commenting on the seemingly high prices for some of the artwork on offer at the gallery. New and younger artists should remember to keep their prices reasonable as the artwork is not selling as a result and this is bad both for the artist and for the gallery. Volunteer time & effort, gallery's

positioning in the community and our financial viability are too important to discredit ourselves by offering artwork that is overpriced and therefore remains unsold!

Storage at gallery – Members may take advantage of the limited storage available but this is on a 'reasonable' usage only. Nothing permanent is available until we have achieved 'stage two' of our plans above.

Commission payments to juniors: It was agreed in principle that the gallery either hold in trust or pay parent/guardian the commission on artworks sold until that artist is eighteen (18) yrs of age.